

THE TILE COMPANY

Encaustic Tile Guide



CLEANING, SEALING & AFTERCARE – ENCAUSTIC CEMENT FLOOR TILES

INTENSIVE CLEANING & SEALING GUIDE FOR ENCAUSTIC TILES

The following is a cleaning and sealing guide for your encaustic floor tiles. The products and methods specified should ensure that surfaces cleaned and conditioned before sealing. Future cleaning and aftercare then made easier following the application of a suitable protective seal.



CLEANING....

1. REMOVING DIRT AND GRIME – CONDITIONING BEFORE SEALING AND GROUTING



LTP GRIMEX

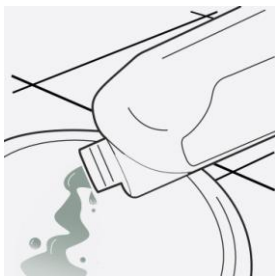
LTP Grimex is a high performance product for stripping and cleaning of vitrified glazed ceramics, porcelain, travertine, natural stone, sandstone, slate, marble, granite, terracotta, quarry, brick, concrete, external paving, terrazzo and other mineral floors & walls. On larger areas scrubber drier machines can be used. This product will also work extremely well to clean up the dirty grout joints.

| APPLICATION | 1ltr | 5ltr | 25ltr |
|------------------|------------------------------|-------------------------------|--------------------------------|
| Surface Cleaning | 60 M ² Per Bottle | 300 M ² Per Bottle | 1500 M ² Per Bottle |
| Deep Stripping | 30 M ² Per Bottle | 150 M ² Per Bottle | 750 M ² Per Bottle |
| In Extreme Cases | 15 M ² Per Bottle | 75 M ² Per Bottle | 375 M ² Per Bottle |

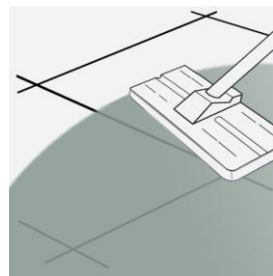
TECHNICAL FEATURES

- Non hazardous
- High performance
- Fast acting
- Easy to use
- Walls & floors
- Interior & exterior use
- Deep cleaning

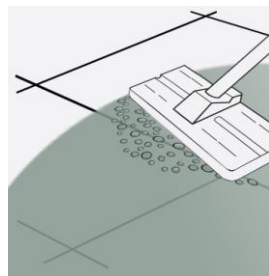
DIRECTIONS FOR USE:



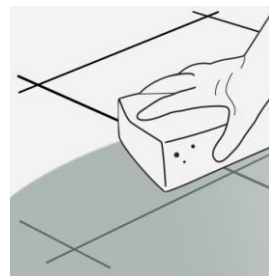
STEP 1.
Dilute solution 1 : 10 with cool water.



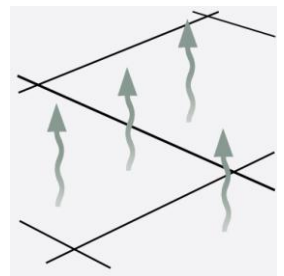
STEP 2.
Working in manageable areas at a time apply the solution to the surface. Leave for 5 minutes.



STEP 3.
Scrub surfaces and grout joints using a white emulsifying pad to release any residues.



STEP 4.
Sponge up or extract released residues. Rinse with water a second time and extract again.



STEP 5.
Allow surfaces to dry before allowing traffic or sealing.

This information is offered without guarantee. The material should be used so as to take account of the local conditions and the surfaces to be treated. In case of doubt, the product should be tried out in an inconspicuous area



For any LTP product information call our technical helpline +44 (0) 1823 666213
Visit our website www.ltp-online.co.uk



THE TILE COMPANY

Encaustic Tile Guide



FURTHER INFORMATION – INTENSIVE CLEANING:

After applying the cleaning solution work in teams of two. One should agitate the surface. The other should use the sponge for immediate extraction. This will prevent released residues re-absorbing into the surface and greatly reduce the drying time of surfaces.

Try to work in manageable areas at a time and make sure to rinse well with plenty of water after each application. Rinsing should be repeated at least 2 times after cleaning. In areas where the staining is deep repeat the process until all of the stains have gone.

USEFUL EQUIPMENT: 4pc pole, pad holder, white pad, buckets, sponges, absorbant towels (for spillage control), Plastic film and masking tape for covering and protecting any surfaces not to be cleaned. Mop and bucket for rinsing.

Ensure that any sensitive surfaces not to be cleaned are properly covered and protected before beginning. Ensure that gloves and eye protection and suitable clothing are worn. If potable water is used for rinsing we would suggest changing the water after every 5 M².

SEALING....

2. PROTECTING THE TILES AFTER CLEANING AND BEFORE GROUTING



LTP MATTSTONE

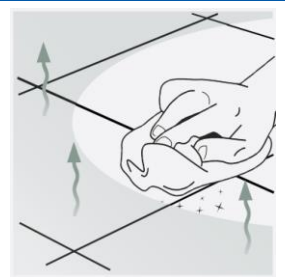
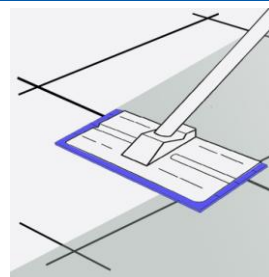
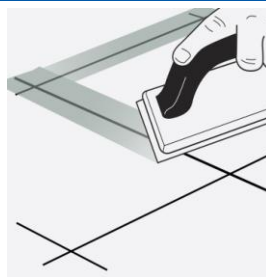
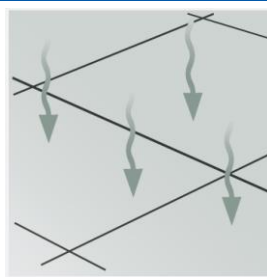
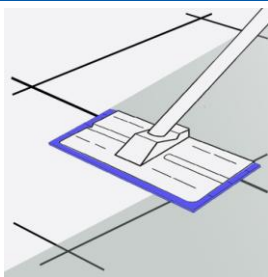
A solvent based impregnating sealer. Dries to leave surfaces with a delicately enhanced natural finish. Helps protect against staining. Treated surfaces strongly repel water, oil and grease. This product allows surfaces to breathe. Ideal for protecting porous surfaces that do not have a damp proof course. This product is non film forming.

| APPLICATION | 500 ml | 1 ltr | 5 ltr |
|--------------------------|-----------------------------|----------------------------|-----------------------------|
| Low porosity surfaces | 7.5 M ² Per coat | 15 M ² Per coat | 75 M ² Per coat |
| Higher porosity surfaces | 2.5 M ² Per coat | 5 M ² Per coat | 25 M ² Per coat |
| Polished surfaces | 15 M ² Per coat | 30 M ² Per coat | 150 M ² Per coat |

TECHNICAL FEATURES

- Solvent based
- High performance
- Natural finish
- Easy to apply
- Interior & exterior use
- Breathable

DIRECTIONS FOR USE:



STEP 1.
Under floor heating should be off. Apply sealer to the surface of the tile & spread out evenly using a sealant applicator.

STEP 2.
Repeat the sealing process until the tiles are completely saturated.
Allow sealer to absorb naturally. Leave overnight to dry.

STEP 3.
Grout in the joints. Clean off all of the residual grout and leave to dry. Once dry dust off any remaining residues.

STEP 4.
Apply a further coat of sealer making sure to cover the joints as well.

STEP 5.
45 minutes after application dry buff the surface to remove any excess sealer.

Newly sealed surfaces should be left to dry for a minimum of 12 hours before allowing heavy traffic.

This information is offered without guarantee. The material should be used so as to take account of the local conditions and the surfaces to be treated. In case of doubt, the product should be tried out in an inconspicuous area



For any LTP product information call our technical helpline +44 (0) 1823 666213
Visit our website www.ltp-online.co.uk



THE TILE COMPANY

Encaustic Tile Guide



FURTHER INFORMATION - SEALING:

Ensure that any surfaces not to be treated are properly covered and protected before beginning.

LTP Mattstone will make surfaces appear slightly darker following treatment.

Remove any excess sealer from the surface of the tiles 45 minutes after each application.

If the sealing products are to be used in areas where food is consumed: Once cured they are completely inert, so therefore considered to be food safe. In areas of high traffic it may be necessary to apply a top up coat of protection every 3 – 4 years. If LTP Waxwash floor tile cleaner is used for the daily/weekly aftercare then a top up coat can be applied without the need to strip the surface back.

AFTERCARE.....

3. DAILY/WEEKLY CLEANING...



LTP WAXWASH

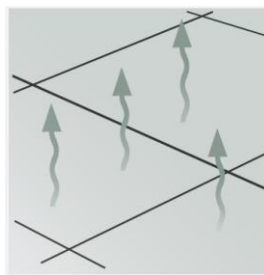
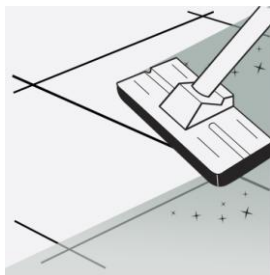
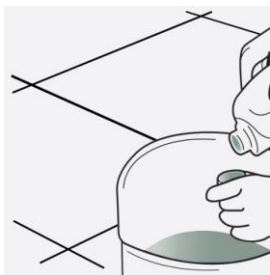
A gentle cleaner especially formulated to clean without damaging the most delicate surfaces. Cleans without removing the protective seal or damaging the stone, leaving the floor with a fresh clean fragrance. Suitable for use on sealed, and un-sealed, polished and unpolished surfaces. Can also be used in scrubber drier machines. For more information refer to the technical data sheet.

| APPLICATION | 1 ltr | 5 ltr | 25 ltr |
|---------------------------|-----------------|------------------|--------|
| 20 M ² surface | 40 washes aprox | 200 washes aprox | N/A |

TECHNICAL FEATURES

- Environmentally friendly
- PH Neutral
- Phosphate free
- Non film forming
- Commercial & domestic
- Sealed and unsealed surfaces
- Fresh clean fragrance
- Interior & exterior use

DIRECTIONS FOR USE:



**Concentrated
Formula
Up to
40 Washes
From 1 litre**

STEP 1.
Dilute 1 capful of cleaner per litre of water.

STEP 2.
Mop surfaces with the solution.

STEP 3.
No need to rinse. Leave surfaces to dry.

STEP 4.
Keep off of surfaces until they are completely dry.

Head Office:
The Tile Company Ltd/Direct Stone Importers
Malton Road, Monks Cross, York YO32 9TE

Tel: 01904 415527
Email: sales@thetileco-online.co.uk
Web: www.thetileco-online.co.uk

This information is offered without guarantee. The material should be used so as to take account of the local conditions and the surfaces to be treated. In case of doubt, the product should be tried out in an inconspicuous area



For any LTP product information call our
technical helpline +44 (0) 1823 666213
Visit our website www.ltp-online.co.uk

